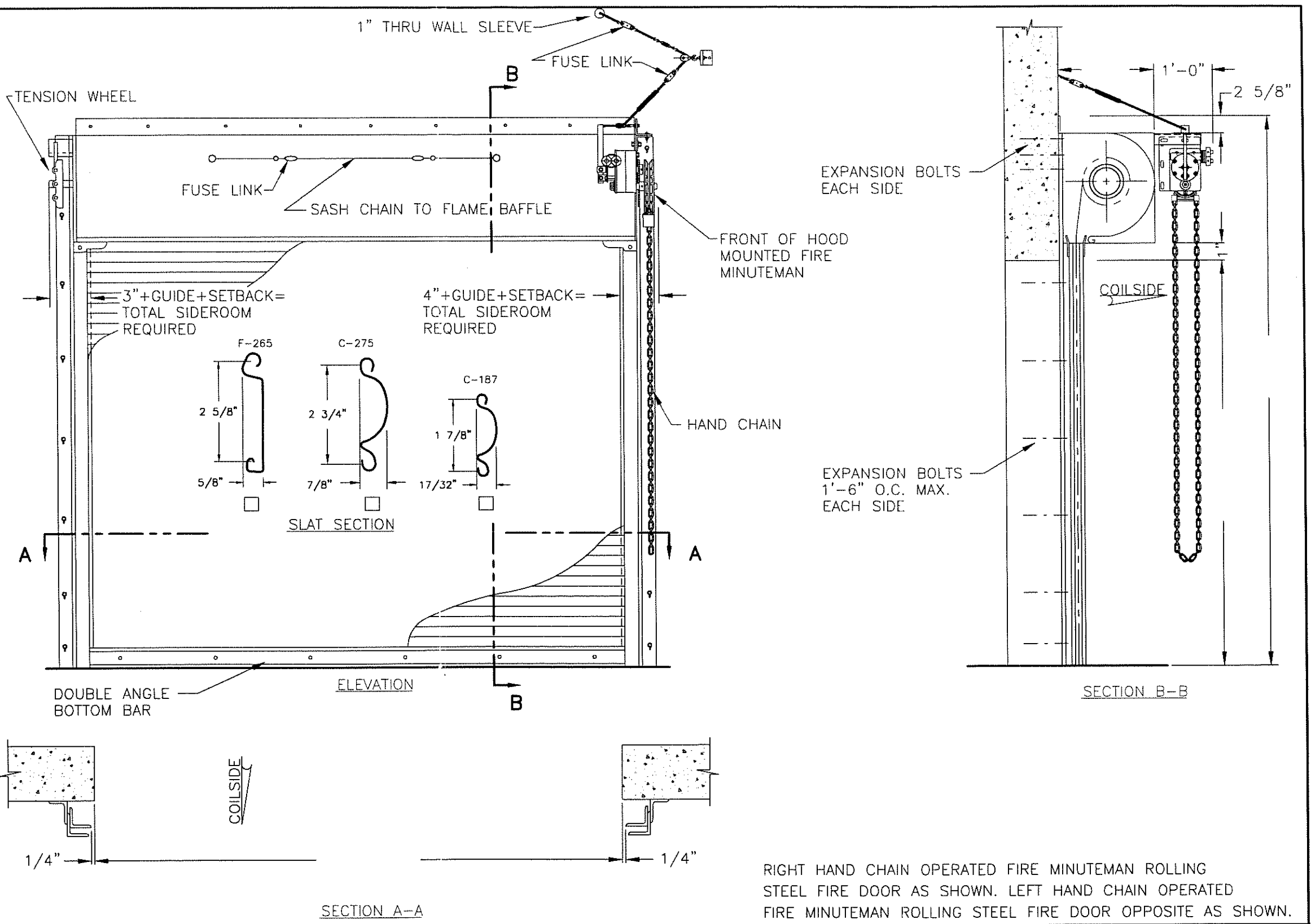


SPECIFICATIONS	
DOOR MARK	
QUANTITY	
WIDTH	
HEIGHT	
MATERIAL	
CURTAIN	GA. GALVANIZED STEEL
HOOD	24 GA. GALVANIZED STEEL
GUIDES	STEEL $\frac{1}{2}$ "s (3/16 MIN. THK.)
BOTTOM BAR	STEEL $\frac{1}{2}$ "s (GALVANIZED)
FINISH	
FERROUS SURFACES	SHOP PRIMED (BLACK)
HOOD CURTAIN	BAKED ON GREY POLYESTER TOP COAT
NOTES	
DOOR WILL BE AUTOMATIC SELF CLOSING UPON MELTING OF A FUSIBLE LINK	
DOOR WILL BE UNDERWRITERS LABORATORIES CLASS "A" LABEL, THREE HOUR RATED	
DOOR WILL BE FACTORY MUTUAL APPROVED	
DOOR WILL HAVE ALTERNATE MALLEABLE IRON ENDLOCKS.	

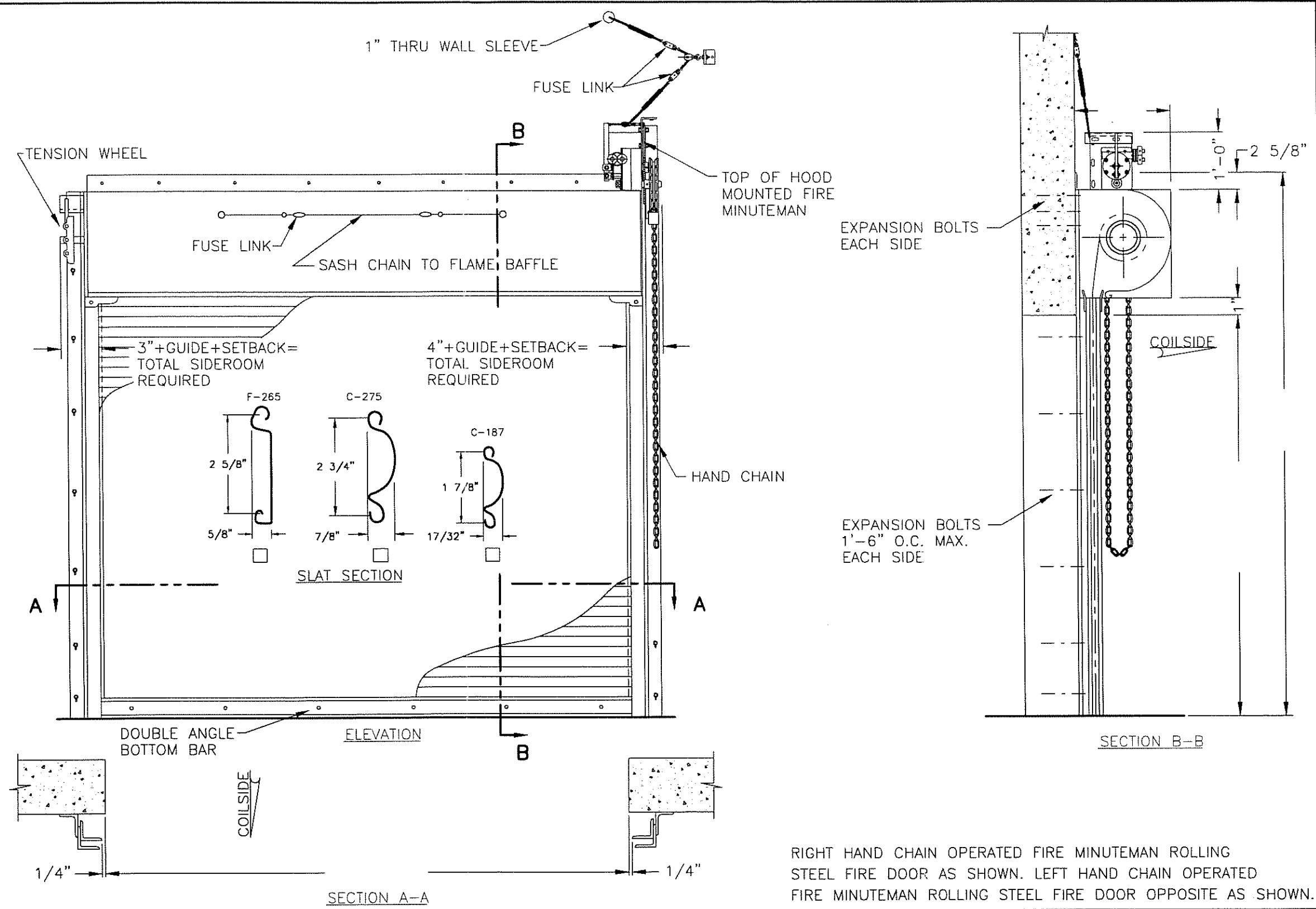


DISTRIBUTOR : OVERHEAD DOOR CO. OF		P.O.#	
DATE	REVISION	SHEET NO.	JOB NO.
		DR. BY	DATE:
			SCALE: N.T.S.



DRAWING NO.	MODEL / SERIES
	LFN-2 /
OVERHEAD DOOR CO. OF PENNA., INC. LEWISTOWN, PA.	

SPECIFICATIONS	
DOOR MARK	
QUANTITY	
WIDTH	
HEIGHT	
MATERIAL	
CURTAIN	GA. GALVANIZED STEEL
HOOD	24 GA. GALVANIZED STEEL
GUIDES	STEEL $\frac{1}{2}$ "s (3/16 MIN. THK.)
BOTTOM BAR	STEEL $\frac{1}{2}$ "s (GALVANIZED)
FINISH	
FERROUS SURFACES	SHOP PRIMED (BLACK)
HOOD CURTAIN	BAKED ON GREY POLYESTER TOP COAT
NOTES	
DOOR WILL BE AUTOMATIC SELF CLOSING UPON MELTING OF A FUSIBLE LINK	
DOOR WILL BE UNDERWRITERS LABORATORIES CLASS "A" LABEL, THREE HOUR RATED	
DOOR WILL BE FACTORY MUTUAL APPROVED	
DOOR WILL HAVE ALTERNATE MALLEABLE IRON ENDLOCKS.	

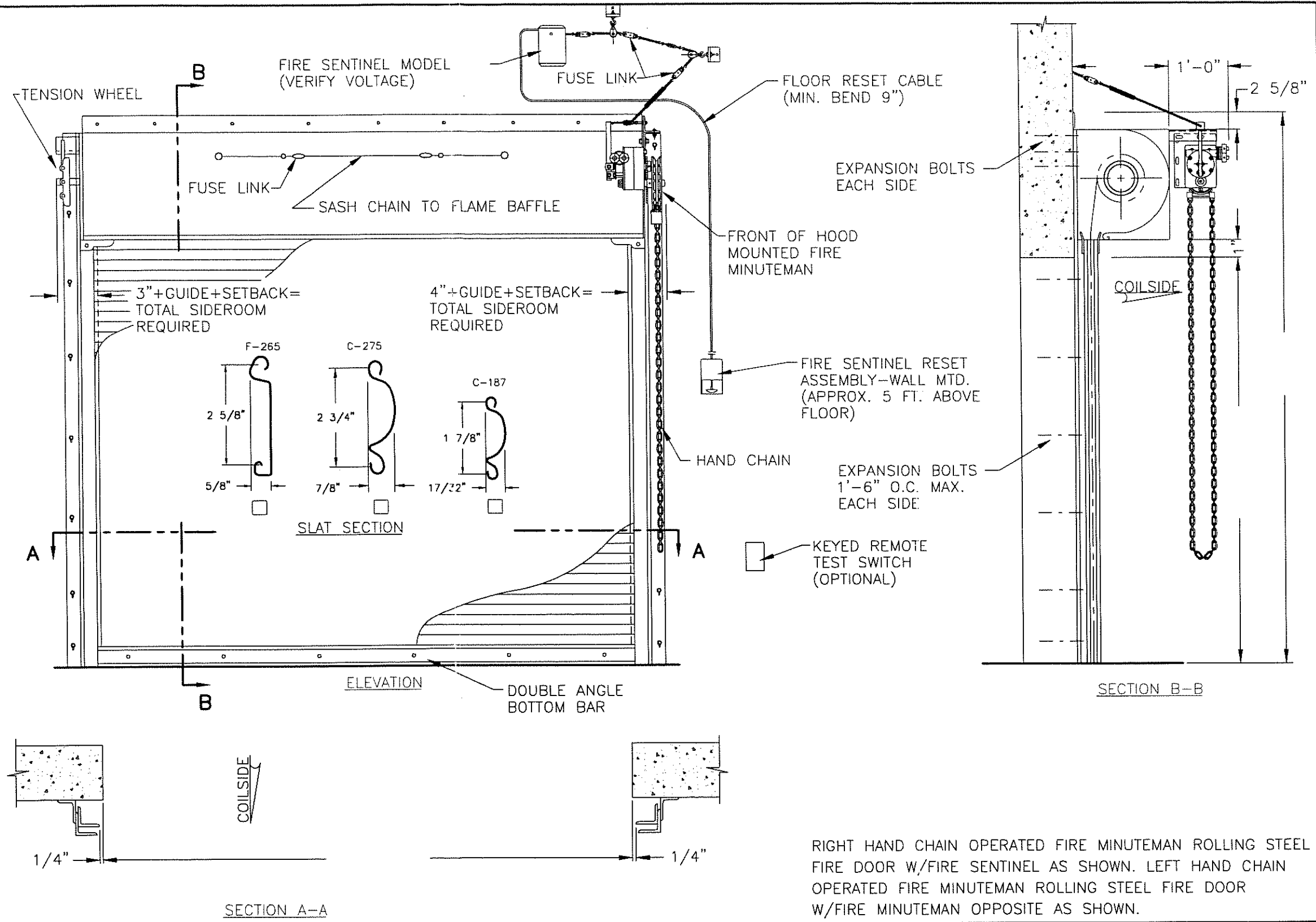


DISTRIBUTOR : OVERHEAD DOOR CO. OF		P.O.#	
DATE	REVISION	SHEET NO.	JOB NO.
		DR. BY	DATE:
			SCALE: N.T.S.



DRAWING NO.	MODEL / SERIES
	LFN-2 /
OVERHEAD DOOR CO. OF PENNA., INC. LEWISTOWN, PA.	

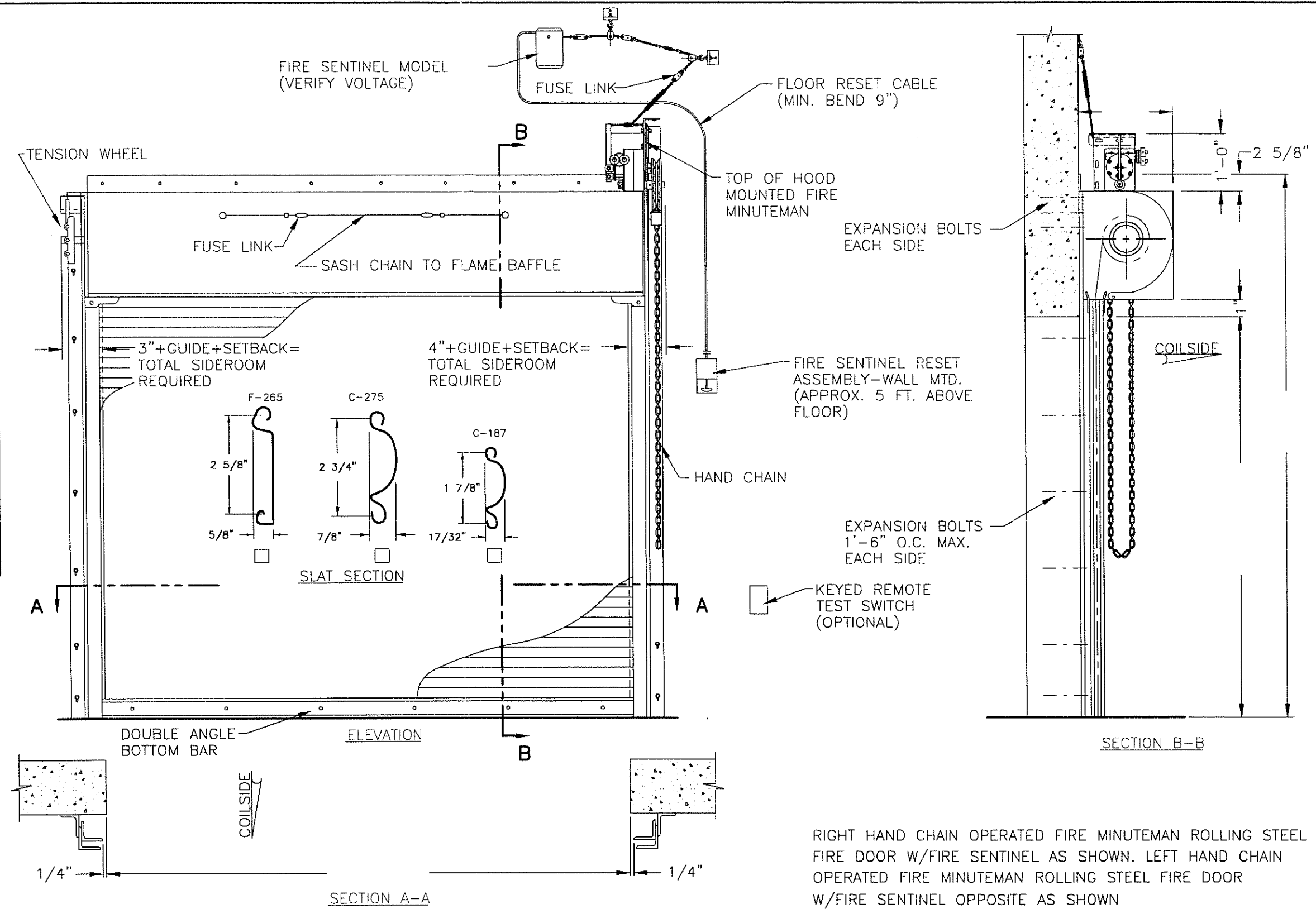
SPECIFICATIONS	
DOOR MARK	
QUANTITY	
WIDTH	
HEIGHT	
MATERIAL	
CURTAIN	GA. GALVANIZED STEEL
HOOD	24 GA. GALVANIZED STEEL
GUIDES	STEEL $\frac{1}{2}$ "s (3/16 MIN. THK.)
BOTTOM BAR	STEEL $\frac{1}{2}$ "s (GALVANIZED)
FINISH	
FERROUS SURFACES	SHOP PRIMED (BLACK)
HOOD CURTAIN	BAKED ON GREY POLYESTER TOP COAT
NOTES	
DOOR WILL BE AUTOMATIC SELF CLOSING UPON MELTING OF A FUSIBLE LINK OR ACTIVATION OF THE FIRE SENTINEL MODEL	
DOOR WILL BE UNDERWRITERS LABORATORIES CLASS "A" LABEL, THREE HOUR RATED	
DOOR WILL BE FACTORY MUTUAL APPROVED	
DOOR WILL HAVE ALTERNATE MALLEABLE IRON ENDLOCKS.	



RIGHT HAND CHAIN OPERATED FIRE MINUTEMAN ROLLING STEEL FIRE DOOR W/FIRE SENTINEL AS SHOWN. LEFT HAND CHAIN OPERATED FIRE MINUTEMAN ROLLING STEEL FIRE DOOR W/FIRE MINUTEMAN OPPOSITE AS SHOWN.

DISTRIBUTOR : OVERHEAD DOOR CO. OF				P.O.#			DRAWING NO.	MODEL / SERIES
DATE	REVISION	SHEET NO.	JOB NO.	DR. BY	DATE:		SCALE: N.T.S.	OVERHEAD DOOR CO. OF PENNA., INC.
							LEWISTOWN, PA.	

SPECIFICATIONS	
DOOR MARK	
QUANTITY	
WIDTH	
HEIGHT	
MATERIAL	
CURTAIN	GA. GALVANIZED STEEL
HOOD	24 GA. GALVANIZED STEEL
GUIDES	STEEL b "s (3/16 MIN. THK.)
BOTTOM BAR	STEEL H's (GALVANIZED)
FINISH	
FERROUS SURFACES	SHOP PRIMED (BLACK)
HOOD CURTAIN	BAKED ON GREY POLYESTER TOP COAT
NOTES	
DOOR WILL BE AUTOMATIC SELF CLOSING UPON MELTING OF A FUSIBLE LINK OR ACTIVATION OF THE FIRE SENTINEL MODEL	
DOOR WILL BE UNDERWRITERS LABORATORIES CLASS "A" LABEL, THREE HOUR RATED	
DOOR WILL BE FACTORY MUTUAL APPROVED	
DOOR WILL HAVE ALTERNATE MALLEABLE IRON ENDLOCKS.	



RIGHT HAND CHAIN OPERATED FIRE MINUTEMAN ROLLING STEEL FIRE DOOR W/FIRE SENTINEL AS SHOWN. LEFT HAND CHAIN OPERATED FIRE MINUTEMAN ROLLING STEEL FIRE DOOR W/FIRE SENTINEL OPPOSITE AS SHOWN

DISTRIBUTOR : OVERHEAD DOOR CO. OF		P.O.#	
DATE	REVISION	SHEET NO.	JOB NO.
		DR. BY	DATE:
			SCALE: N.T.S.



DRAWING NO.	MODEL / SERIES
	LFN-2 /
OVERHEAD DOOR CO. OF PENNA., INC. LEWISTOWN, PA.	