

TIGER Drylac®

ral colors

exterior powder coatings



TIGER Drylac®
Powder Coatings

series 49

Weather Resistant TGIC Polyester Powder Coatings for Exterior and Interior Applications

Features: Good weather resistance, good mechanical properties, very smooth flow, good storage stability, good coverage

Gloss Level: All colors featured in this chart are available as standard products in smooth glossy with a gloss level of 80-90+ (gloss level according to Garner 60 deg., ASTM D 523).

Typical Applications: Residential windows and doors, garden equipment, patio furniture, automotive accessories, bicycles, motorcycles, sporting goods.

Standard Packaging: 55 lb boxes or 5 lb mini packs

Datasheets: Periodically updated datasheets, showing cure parameters, test results, pre-treatment information and more are available for all products in this chart. Please contact your local TIGER Drylac office or visit www.tigerdrylac.com for the most current edition.



All Series 49 (custom and stock) products, made in the US or Canada are periodically re-certified and carry the UL (Underwriter Laboratories) Recognized Component mark. This UL mark is for all equipment and products intended for the US and Canadian market.

series 38

A Highly Weather and UV-Resistant Powder Coatings based on Super Durable TGIC Polyester for Exterior and Interior Applications

Features: Superior gloss and color retention, excellent weather resistance, good mechanical properties, superior chalk resistance, smooth flow, excellent edge coverage, good storage stability. AAMA 2604-05 conforming. Under certain conditions TIGER Drylac will offer a 5-year warranty for Series 38.

Gloss Level: All colors featured in this chart are available as standard products in smooth glossy with a gloss level of 80-90 (gloss level according to Gardner 60 deg., ASTM D 523).

Typical Applications: Agricultural and construction equipment, bus shelters, lighting fixtures, playground equipment, site furnishings, garage doors, stadium seating, fencing, automotive equipment, and marine applications.

Standard Packaging: 44 lb boxes and 5 lb mini packs

Datasheets: Periodically updated datasheets, showing cure parameters, test results, pre-treatment information and more are available for all products in this chart. Please contact your local TIGER Drylac office or visit www.tigerdrylac.com for the most current edition.

RAL colors not available: Due to pigmentation a small percentage of colors in the yellow, orange, red and purple range offer only limited UV stability and are therefore not available.

More standard Series 38 products: For additional architectural mattes, glossy and metallic products please see our Series 38 Super Durable Powder Coatings brochure.

Custom colors: Custom colors not shown in this brochure can be custom made in 7 to 10 days. Due to pigmentation some colors in the yellow, orange, red and purple range offer only limited UV stability. UV stability of custom colors in that color range must be verified by our production laboratories on a case by case basis.

TIGER Drylac continues to offer the largest product selection in the powder coating industry. For additional standard products and innovative powder coating solutions please see our numerous other brochures including:

TIGER Drylac Metallic

TIGER Drylac Special Effect

TIGER Drylac Specialties

TIGER Drylac Series 38 Super Durable

TIGER Drylac Anti-Graffiti

TIGER Drylac Series 28 Super Durable
(for approved applicators only)

TIGER Drylac Series 75 Fluoropolymer
(for approved applicators only)

TIGER Drylac Wood

Specifying TIGER Drylac products

In order to eliminate possible errors in specifying our products, we recommend using the full product number rather than specifying the RAL number only. This product number not only describes the Series/Chemistry, but also the exact color, finish and sheen.

Please check with your local TIGER Drylac office or representative for assistance with specifications and suitability issues.

Product Code Matrix

3 8 / 3 0 0 2 5

Chemistry

- 09 Polyester/Epoxy Hybrid
- 16 Acrylic Hybrid
- 28 Super Durable Polyester TGIC (for approved applicators only)
- 39 Polyester TGIC
- 44 Polyurethane
- 49 Polyester TGIC
- 59 Polyester TGIC-Free
- 69 Epoxy
- 75 Fluoropolymer (for approved applicators only)
- 89 Polyester/Epoxy Hybrid, Low/Fast Cure

Color Group (starting with)

- 1 White
- 2 Yellow / Orange
- 3 Red
- 4 Blue
- 5 Green
- 6 Brown
- 7 Grey
- 8 Black
- 9 Metallic

					
RAL 1000 49/15200 38/15000	RAL 1015 49/15320 38/15015	RAL 1033 49/22240	RAL 2012 49/24690	RAL 3014 49/31080	RAL 4004 49/31020 38/30024
					
RAL 1001 49/15190 38/15001	RAL 1016 49/22520 38/20016	RAL 1034 49/23910	RAL 3000 49/33120 38/30000	RAL 3015 49/33670	RAL 4005 49/42780
					
RAL 1002 49/22590 38/20002	RAL 1017 49/22510 38/20017	RAL 1037 49/20096	RAL 3001 49/31120 38/30001	RAL 3016 49/31980 38/30016	RAL 4006 49/32090
					
RAL 1003 49/22580	RAL 1018 49/21830 38/20018	RAL 2000 49/24570	RAL 3002 49/31110 38/30002	RAL 3017 49/31060	RAL 4007 49/32540 38/30025
					
RAL 1004 49/22570 38/20004	RAL 1019 49/13660 38/15019	RAL 2001 49/24560 38/23170	RAL 3003 49/31100 38/30003	RAL 3018 49/31050	RAL 4008 49/32280
					
RAL 1005 49/22560 38/20005	RAL 1020 49/22500 38/20020	RAL 2002 49/24550 38/25002	RAL 3004 49/33900 38/30004	RAL 3020 49/31040 38/30021	RAL 4009 49/34740
					
RAL 1006 49/22550 38/20006	RAL 1021 49/22280 38/20021	RAL 2003 49/24540	RAL 3005 49/31900 38/30005	RAL 3022 49/33700	RAL 4010 49/40490
					
RAL 1007 49/22540	RAL 1023 49/22490 38/20023	RAL 2004 49/24530	RAL 3007 49/31910 38/30007	RAL 3027 49/33660	RAL 5000 49/42200 38/40000
					
RAL 1011 49/15180 38/15011	RAL 1024 49/22480 38/20024	RAL 2008 49/24340	RAL 3009 49/31920 38/30009	RAL 3031 49/34730 38/30031	RAL 5001 49/42210 38/40001
					
RAL 1012 49/22530 38/20012	RAL 1027 49/22470 38/20027	RAL 2009 49/24360	RAL 3011 49/31090 38/30011	RAL 4001 49/43160	RAL 5002 49/42220 38/40002
					
RAL 1013 49/11280 38/10013	RAL 1028 49/22460	RAL 2010 49/24520 38/25001	RAL 3012 49/31940 38/30012	RAL 4002 49/31030 38/30008	RAL 5003 49/42230 38/40003
					
RAL 1014 49/15170 38/15014	RAL 1032 49/22450 38/20032	RAL 2011 49/24580	RAL 3013 49/31950 38/30013	RAL 4003 49/32270	RAL 5004 49/42240 38/40004

					
RAL 5005 49/43190 38/40010	RAL 5019 49/42360 38/40019	RAL 6006 49/52870 38/50006	RAL 6016 49/51020 38/50016	RAL 6027 49/50990 38/50027	RAL 7006 49/72580 38/70006
					
RAL 5007 49/42250 38/40007	RAL 5020 49/44270 38/40018	RAL 6007 49/52860 38/50007	RAL 6017 49/52780 38/50017	RAL 6028 49/52650 38/50028	RAL 7008 49/72570 38/70008
					
RAL 5008 49/42260 38/40008	RAL 5021 49/41190 38/40021	RAL 6008 49/53240 38/50008	RAL 6018 49/52720 38/50018	RAL 6029 49/52640 38/50029	RAL 7009 49/72770 38/70009
					
RAL 5009 49/42270 38/40009	RAL 5022 49/42390 38/40022	RAL 6009 49/52840 38/50009	RAL 6019 49/51000 38/50019	RAL 6032 49/52630 38/50032	RAL 7010 49/72560 38/70014
					
RAL 5010 49/42280 38/40016	RAL 5023 49/44650 38/40023			RAL 6033 49/55010 38/50033	RAL 7011 49/72790 38/70011
					
RAL 5011 49/43180 38/40011	RAL 5024 49/44660 38/40024			RAL 6034 49/55020 38/50034	RAL 7012 49/71180 38/70012
					
RAL 5012 49/43170 38/40012	RAL 6000 49/53160 38/50000	RAL 6010 49/52830 38/50031	RAL 6020 49/52710 38/50020	RAL 7000 49/72700 38/70000	RAL 7013 49/72550 38/70013
					
RAL 5013 49/42310 38/40013	RAL 6001 49/52900 38/50005	RAL 6011 49/52820 38/50011	RAL 6021 49/52700 38/50021	RAL 7001 49/72710 38/70003	RAL 7015 49/72820 38/70015
					
RAL 5014 49/42320 38/40014	RAL 6002 49/52890 38/50023	RAL 6012 49/51540 38/50012	RAL 6022 49/52690 38/50022	RAL 7002 49/72720 38/70007	RAL 7016 49/72830 38/70016
					
RAL 5015 49/42330 38/40015	RAL 6003 49/52880 38/50003	RAL 6013 49/52810 38/50013	RAL 6024 49/52680 38/50024	RAL 7003 49/72600 38/70017	RAL 7021 49/72540 38/70021
					
RAL 5017 49/40760 38/40017	RAL 6004 49/50980 38/50004	RAL 6014 49/52800 38/50014	RAL 6025 49/52670 38/50025	RAL 7004 49/73300 38/70004	RAL 7022 49/72850 38/70022
					
RAL 5018 49/41140 38/40020	RAL 6005 49/50670 38/50002	RAL 6015 49/52790 38/50015	RAL 6026 49/52660 38/50026	RAL 7005 49/72590 38/70005	RAL 7023 49/72530 38/70023



RAL 7024 49/72870
38/70024



RAL 7040 49/75470
38/70046



RAL 8007 49/66120
38/60007



RAL 8025 49/66050
38/60025



RAL 7026 49/72880
38/70026



RAL 7042 49/73250
38/70042



RAL 8008 49/66110
38/60008



RAL 8028 49/66500
38/60028



RAL 7030 49/72890
38/70027



RAL 7043 49/72460
38/70043



RAL 8011 49/66100
38/60011



RAL 9001 49/10016
38/10001



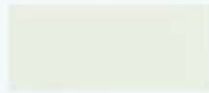
RAL 7031 49/72520
38/70031



RAL 7044 49/75480
38/70044



RAL 8012 49/66090
38/60012



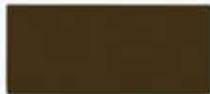
RAL 9002 49/70520
38/10002



RAL 7032 49/72910
38/70001



RAL 7045 49/77890
38/70045



RAL 8014 49/65230
38/60010



RAL 9003 49/11400
38/10003



RAL 7033 49/72510
38/70033



RAL 7046 49/72010
38/70002



RAL 8015 49/63040
38/60015



RAL 9004 49/81950
38/80004



RAL 7034 49/72500
38/70034



RAL 7047 49/72020
38/70047



RAL 8016 49/66080
38/60016



RAL 9005 49/82830
38/80010



RAL 7035 49/73510
38/70035



RAL 8000 49/66170
38/60000



RAL 8017 49/65220
38/60017



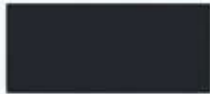
RAL 9010 49/11500
38/10004



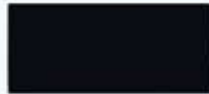
RAL 7036 49/72950
38/70036



RAL 8001 49/66160
38/60005



RAL 8019 49/65490
38/60019



RAL 9011 49/80540
38/80001



RAL 7037 49/72480
38/70037



RAL 8002 49/66150
38/60002



RAL 8022 49/63080
38/60022



RAL 9016 49/11340
38/10010



RAL 7038 49/72470
38/70038



RAL 8003 49/66140
38/60003



RAL 8023 49/66070
38/60023



RAL 9017 49/80550
38/80017



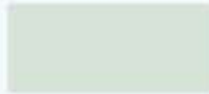
RAL 7039 49/71020
38/70039



RAL 8004 49/66130
38/60004



RAL 8024 49/66060
38/60024



RAL 9018 49/72490
38/10018

exterior

offices and warehouses

- West Coast** 1261 E. Belmont Street
Ontario, CA 91761
Phone: (909) 930-9100
Fax: (909) 930-9111
customerservicewest@tigerdrylac.com
- Northwest** 18808 142nd Avenue N.E., Suite 5B
Woodinville, WA 98072
Phone: (425) 481-3160
Fax: (425) 481-1136
customerservicenw@tigerdrylac.com
- Midwest** 3855 Swenson Avenue
St. Charles, IL 60174
Phone: (630) 513-9999
Fax: (630) 513-9998
customerservicemw@tigerdrylac.com
- East Coast** 1100 Commons Blvd.
Reading, PA 19605
Phone: (610) 926-8148
Fax: (610) 926-8149
customerserviceeast@tigerdrylac.com
- Southeast** 3400 Town Pt. Drive NW, Suite 140
Kennesaw, GA 30144
Phone: (770) 218-2490
Fax: (770) 218-2495
customerservicese@tigerdrylac.com
- South** 339 Exchange Drive
Arlington, TX 76011
Phone: (817) 277-7995
Fax: (817) 277-1931
customerservicesouth@tigerdrylac.com



RAL: Having gained worldwide acceptance over the last few decades, the RAL is the most popular Central European Color Standard used today.

The RAL colors in this chart have been matched as closely as possible. Color chart production methods and influence from heat and light may account for slight color deviation from the actual RAL Standard. This chart therefore can not serve as a standard for RAL color production and is to be used as a guide for color planning and specification only.

To aid in final product selection please contact your regional Tiger Drylac location for a powder coated Q-Panel of the product of your choice.



Member of the
Powder Coating Institute



www.tigerdrylac.com