



INTERIOR HIGH SPEED FABRIC DOOR



PERFECT FOR MANUFACTURING, PHARMACEUTICAL, COLD STORAGE, WAREHOUSE AND DISTRIBUTION FACILITIES

- **Engineered for high cycles**
 - Springless design requires minimal interruption for maintenance
 - Direct-mounted gear drive minimizes wear and tear
 - Variable frequency drive eliminates sudden jolts from door start/stop
- **Airtight design** prevents airborne contaminants from entering a controlled environment and reduces air exchange to no higher than 0.236 cfm/sf (ASTM E-283)
- **Optional vision panels** allow visual access and light
- **Patent-pending curtain lock** enables doors to be repaired quickly and in the field, unlike zippered doors
- **Low maintenance** breakaway design with side impact detection and push button self-repair; plug and play wiring
- **Standard hood** blocks moisture and debris from impeding door operation
- **Optional programmable LED lighting system**



INDUSTRY LEADING
COMMERCIAL & INDUSTRIAL SOLUTIONS

MODEL 991 INTERIOR HIGH SPEED FABRIC DOOR

Standard features at a glance

Maximum width	14'
Maximum height	14'
Maximum opening speed	Up to 70"/sec
Maximum closing speed	Up to 40"/sec
Certified air tightness*	< 0.236 cfm/sq ft
Curtain lock	Yes
Breakaway self reset	Yes
Wind load**	Up to 7.5 psf
Curtain material	2 layers of PVC-coated polyester with 1 layer of polyester weave
Operation	Direct drive motor and gearbox system with field changeable universal handing and door stop safety device
Control panel	Variable frequency drive NEMA 4X cULus listed; Onboard self diagnostic and service reminder; Built-in padlockable fused disconnect
Obstruction safety detection	Infrared sensors mounted in-plane to the door curtain at 18" and 50" - 54" from floor
Reversing safety edge	Wireless reversing edge
Available supply voltages***	110-120V AC 1 PH, 190-207V AC 1PH†, 208-245V AC 1PH, 190-207V AC 3PH†, 208-245V AC 3PH, 456-495V AC 3PH, 575V 3PH† (†requires stand-alone mounted transformer)
Hinged guides	Provide easy access for maintenance
Warranty	5-Year Limited

Options

- **Actuation options** – Push button, key switch, pull switch, loop detector, motion detector, treadle switch, radio control. Wireless options available
- **Signaling device options** – Red/green LED warning light, horn/strobe combination, rotating warning light
- **Programmable LED lighting system** – 3' tall light bar with red, yellow, green lighting
- **20" high vision panels** – spaced evenly across width of door
- **Stainless steel guides, hood, motor cover and head plates**
- **Food and beverage applications** – an FDA-compliant, heavier weight fabric is available

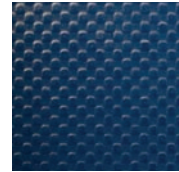
Curtain color options



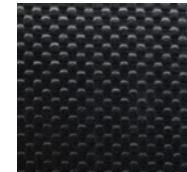
White

Gray

Red



Blue



Black



Orange



Yellow

FDA-compliant applications



FDA Royal Blue



Standard color for guides and bottom bar is yellow. Approximately 200 optional RAL powder coat colors are also available.

Actual colors may vary from brochure due to fluctuation in the printing process. **Always request a color sample from your Overhead Door™ Distributor for accurate color matching.**

* Air tightness is independently tested to ASTM E283 test standard.

** Wind load is the ultimate pressure tested at door width of 10'.

*** Single phase available up to 10'x10' doors.



INDUSTRY LEADING
COMMERCIAL & INDUSTRIAL SOLUTIONS

2501 S. State Hwy. 121 Bus., Suite 200, Lewisville, TX 75067
1-800-929-DOOR • sales@overheaddoor.com
overheaddoor.com

