



## OHD Anywhere® FAQs Table of Contents

App Upgrade FAQs.....	2
Account Setup and Sign-in FAQs .....	6
Retro-Fit Kit Adding a Device FAQs .....	8
Retro-Fit Kit Wi-Fi Setup FAQs .....	8
Door Position Sensor Setup FAQs .....	14
Ceiling Mount Opener Adding a Device FAQs .....	15
Ceiling Mount Opener Wi-Fi FAQs .....	16
Wall Mount Opener Adding a Device FAQs.....	21
Wall Mount Opener Wi-Fi FAQs.....	22
Adding Users and Creating Virtual Keys FAQs .....	27
Adding Rules FAQs.....	28
Operation FAQs .....	29

## App Upgrade FAQs

### **What is different in the new app version?**

Nearly every aspect of the app and the user experience was enhanced. We have listened to user feedback and improved functionality for account set up and management, installation, door operations, control of notifications, and virtual key and rules management.

### **Why do I have to upgrade to latest version?**

In addition to enhancements to the user experience, the new app includes changes to the backend infrastructure to improve performance and reliability. This major update will allow us to make frequent app and security updates that were not otherwise possible with the old version of this app.

### **I can't download the new app on my smartphone. What do I do?**

A new version of app takes advantage of new OS capabilities. It works with Android OS 7 and higher and iOS 11.4 and higher. The old app is compatible with Android 4.4 and higher, or Apple iOS 8 and higher, but is unable to take advantage of new OS capabilities. Upgrade your phone OS to a newer version.

### **Will my old app work if I upgrade to the new one?**

When you successfully login to the new app, the old app will no longer work.

### **Do all the users of my doors need to be on the same version?**

When the primary account or owner of a garage door opener or retrofit kit upgrades, all of the users on that system will be forced to upgrade.

### **I'm trying to sign-in to the app and it's not working. What do I do?**

Verify that you have entered your username and password correctly, then try resetting your password. If you still cannot login with the new password, please contact the OHD Anywhere® Customer Care team at 888.901.2750 Mon-Fri 9am-8pm EST, Sat 10am-6pm EST.

### **I do not remember my password to login to the new version. What do I do?**

You can use forgot password link in the new app to reset your password. If you have trouble resetting your password, see the FAQ on resetting passwords in the account management section.

### **I'm having trouble resetting my password. What do I do?**

When you click on "Reset Password" the app sends an email to the email address that you entered when you set up your account. The email includes a link to reset your account password. The link expires after 24 hours, but you can send another link anytime by hitting "reset password" again. The reset-password link will work on mobile device only if the app is already installed.

### **My username is not a valid email address, so I can't reset my password. What do I do?**

If you set up your account using an invalid email address, you will not be able to receive an email to reset your password. Contact customer service to help you walk through setting up a new account with a valid email and adding your doors to the new account.

### **I'm am resetting my password, but I can't see the link in my email. What do I do?**

If you are unable to click on the link in the email, it may be the security settings on the email app that blocks or disables links in the body of an email. You may have to update your email app to the latest version, change the security settings in your email app, or use another email app to access your email that allows you to click on links.

### **I'm am resetting my password, but I can't open the link in my email. What do I do?**

The link opens in the default browser on the mobile device before launching the app. Supported browsers are Safari, Chrome, and Edge for iOS and Chrome, Firefox, and Edge on Android. If the link does not open your browser, check that you have the most up to date version of the

browser. If that does not work contact the OHD Anywhere® Customer Care team at 888.901.2750 Mon-Fri 9am-8pm EST, Sat 10am-6pm EST.

### **Do I need to setup my garage door devices or rules when I upgrade to the new version?**

No. You just need login to the new app like the old app. After successful logging in, all your devices, virtual key invitations and rules will be imported into the new version of the app.

### **I do not see my dashboard or any of my doors, invites and rules when I log in.**

When you log to the new app there may be delay in migrating data to the new version. If the doors do not appear after a couple of minutes, try looking at another app and then going back to this app, which will refresh the data on the screen. If that doesn't help, logout and login. And if that fails, contact the OHD Anywhere® Customer Care team at 888.901.2750 Mon-Fri 9am-8pm EST, Sat 10am-6pm EST.

### **I am not getting notification on the new app. What do I do?**

The notifications are customized by going to the main menu and selecting manage notification. From there you can set what type of notifications you would like to receive. Also make sure notifications are enabled for the app in your smartphone settings.

### **I am getting notifications on the new app, but no sounds. What do I do?**

This version of the app does not include sounds with notifications. Future versions may include notification sounds. You can turn on and off notification sounds through the phone settings under notifications.

### **Why is there a delay in notifications?**

Notifications depend on provider-specific message delivery services such as APNS (for iOS) and FCM (for Android) to deliver message to the end user device, and the delivery timing is controlled by those services. You can always confirm door events in the door history section of the app.

## **How do I activate my account?**

When you create an account, the app emails an activation link to your username, which is an email address. Open the email and click on the link to activate your account. The activation link expires after 24 hours.

## **I'm can't find the email to activate my account. What do I do?**

If you cannot find the link to activate your account in your email or if the activation time has expired, you can get another activation link by signing in with the credentials you used during sign-up. Activation will work on mobile device only if the app is already installed.

## **I'm can't find the activation link in my email. What do I do?**

If you are unable to click on the link in the email, it may be the security settings on the email app that blocks or disables links in the body of an email. You may have to update your email app to the latest version, change the security settings in your email app, or use another email app to access your email that allows you to click on links.

## **The activation link does not work. What do I do?**

The link opens in the default browser on the mobile device before launching the app. Supported browsers are Safari, Chrome, and Edge for iOS and Chrome, Firefox, and Edge on Android. If the link does not open your browser, check that you have the most up to date version of the browser. If that does not work contact the OHD Anywhere® Customer Care team at 888.901.2750 Mon-Fri 9am-8pm EST, Sat 10am-6pm EST.

## **Why do I need to provide my zip code?**

We ask you to provide your zip code when you create an account to inform you of new smart home integrations, features, and updates specific to your region. Overhead Door Corporation values your privacy and never shares your zip code information.

## Account Setup and Sign-in FAQs

Always reference printed instructions with the device and the on-screen prompts inside the app.

### **I'm trying to sign-in to the app and it's not working. What do I do?**

Verify that you have entered your username and password correctly, then try resetting your password. If you still cannot login with the new password, please contact the OHD Anywhere® Customer Care team at 888.901.2750 Mon-Fri 9am-8pm EST, Sat 10am-6pm EST.

### **How do I activate my account?**

When you create an account, the app emails an activation link to your username, which is an email address. Open the email and click on the link to activate your account. The activation link expires after 24 hours.

### **I'm can't find the email to activate my account. What do I do?**

If you cannot find the link to activate your account in your email or if the activation time has expired, you can get another activation link by signing in with the credentials you used during sign-up. Activation will work on mobile device only if the app is already installed.

### **I'm can't find the activation link in my email. What do I do?**

If you are unable to click on the link in the email, it may be the security settings on the email app that blocks or disables links in the body of an email. You may have to update your email app to the latest version, change the security settings in your email app, or use another email app to access your email that allows you to click on links.

### **The activation link does not work. What do I do?**

The link opens in the default browser on the mobile device before launching the app. Supported browsers are Safari, Chrome, and Edge for iOS and Chrome, Firefox, and Edge on Android. If the link does not open your browser, check that you have the most up to date version of the browser. If that does not work contact the OHD Anywhere® Customer Care team at 888.901.2750 Mon-Fri 9am-8pm EST, Sat 10am-6pm EST.

### **I'm having trouble resetting my password. What do I do?**

When you click on "Reset Password" the app sends an email to the email address that you entered when you set up your account. The email includes a link to reset your account password. The link expires after 24 hours, but you can send another link anytime by hitting "reset password" again. The reset-password link will work on mobile device only if the app is already installed.

### **My username is not a valid email address, so I can't reset my password. What do I do?**

If you set up your account using an invalid email address, you will not be able to receive an email to reset your password. Contact customer service to help you walk through setting up a new account with a valid email and adding your doors to the new account.

### **I'm am resetting my password, but I can't see the link in my email. What do I do?**

If you are unable to click on the link in the email, it may be the security settings on the email app that blocks or disables links in the body of an email. You may have to update your email app to the latest version, change the security settings in your email app, or use another email app to access your email that allows you to click on links.

### **I'm am resetting my password, but I can't open the link in my email. What do I do?**

The link opens in the default browser on the mobile device before launching the app. Supported browsers are Safari, Chrome, and Edge for iOS and Chrome, Firefox, and Edge on Android. If the link does not open your browser, check that you have the most up to date version of the browser. If that does not work contact the OHD Anywhere® Customer Care team at 888.901.2750 Mon-Fri 9am-8pm EST, Sat 10am-6pm EST.

### **Why do I need to provide my zip code?**

We ask you to provide your zip code when you create an account to inform you of new smart home integrations, features, and updates specific to your

region. Overhead Door Corporation values your privacy and never shares your zip code information.

## Retro-Fit Kit Adding a Device FAQs

Always reference printed instructions with the device and the on-screen prompts inside the app.

### **Where can I find the serial number on my device?**

The serial number is located on the back of the door control module, on a white rectangular sticker. If you have not already, you will have to remove mounting bracket to scan the serial number.

### **I'm receiving an error when I try to register my device. What do I do?**

There are several reasons you might receive an error when attempting to register your device. If you have not already, first try entering the serial number manually. If the error persists, it might be that the product was previously registered under a different account- this occurs frequently when customers move into a new home. Customer service can easily resolve this issue. Contact the OHD Anywhere® Customer Care team at 888.901.2750 Mon-Fri 9am-8pm EST, Sat 10am-6pm EST.

## Retro-Fit Kit Wi-Fi Setup FAQs

Always reference printed instructions with the device and the on-screen prompts inside the app.

### **I don't know if my home Wi-Fi has a strong signal in the garage. How do I find out?**

To function effectively, your door control module needs at least two bars or (-65dbm) of Wi-Fi signal to communicate with the app and the cloud. The easiest way to find out if you have adequate signal strength is simply to stand near your door control module and look at the Wi-Fi icon on your smart phone. On iOS devices, you can see your Wi-Fi signal icon in the top corner of the screen. On Android devices, signal icon can be found on the top of the screen.



## **My home Wi-Fi does not have a strong enough signal in the garage. What should I do?**

If your home Wi-Fi signal does not adequately cover your garage, you have a few things you can do to improve the signal strength. First, you can make sure that the Wi-Fi router is out in the open, not behind a flat screen TV or in a cabinet. You can also try moving your Wi-Fi router closer to the garage. If that does not work, you can also purchase a Wi-Fi extender. Wi-Fi extenders are available at electronics stores such as Best Buy®.

## **How do I turn off cellular data? Why is this necessary?**

During the Wi-Fi set up process, your smartphone needs to connect directly to the garage door Wi-Fi network. Some smartphones automatically try to use cellular data when a Wi-Fi network is not connected to the Internet. To avoid such connection issues, turning off cellular data during setup is recommended.

For iOS devices, turn off cellular data by exiting the app and opening settings. Once in settings, find the option labeled “Cellular” and tap to open Cellular settings. At the top of the page, tap to turn the green switch on the right-hand side of the screen off. The switch should turn grey.

For Android devices, turn off cellular data by swiping down from the top of the screen and tapping settings. Find and press ‘Data Usage’ to open cellular settings. Flick the ‘Mobile Data’ switch from on to off.

## **Where is the Wi-Fi button on my device?**

The Wi-Fi button is located on the upper right side of the door control module, and should be labeled WI-FI. The diagram on the right also shows the precise location of the button by highlighting it blue.



## **My light isn't turning yellow. What do I do?**

Press and hold the Wi-Fi button for several seconds until you hear a beep, and the LED light should turn yellow. If the LED light does not turn yellow

after several seconds, contact the OHD Anywhere® Customer Care team at 888.901.2750 Mon-Fri 9am-8pm EST, Sat 10am-6pm EST.

### **What do my light colors mean?**

A **red** light means that the unit is not connected to your home Wi-Fi network.

A **yellow** light means that the garage door is in Wi-Fi configuration mode and ready to be configured. When the **red** LED changes to **yellow**, the door control module has created a gdocntrl-xxxx Wi-Fi network, which allows your smartphone to connect to the door control module.

A **flashing green** light means your device is communicating with your home Wi-Fi network, but is not able to access the internet or the cloud. Flashing green lights often change to solid green after 5-10 minutes, signaling your device has secured stable communication with your home Wi-Fi and the cloud.

A **solid green** light means your device is successfully connected to your home Wi-Fi network and has established a secure communication link to the cloud.

### **What is the “gdocntrl-XXXX” network and why do I need to connect to it?**

The **yellow** LED light on the door control module means that the opener is in Wi-Fi configuration mode. In configuration mode the door control module creates a Wi-Fi network that allows your phone to communicate with the garage door module. Once your smartphone is connected to the garage door network, named gdocntrl-xxxx, it allow your smart phone to pass your home Wi-Fi network name and password of your home Wi-Fi network to the door control module when you input it. Connecting to the gdocntrl network is necessary to connect your door control module to your home Wi-Fi network.

### **What is a 2.4 GHz network and how do I know if my home network qualifies?**

You may have noticed you have two or even three networks with the same name followed by 2G or 5G, both associated with your home Wi-Fi. This is because many Wi-Fi providers offer two ‘bands’ of Wi-Fi to your home,

both 2.4 GHz and 5 GHz. These 'bands' can both provide reliable Wi-Fi to your home, but different devices can work best on either 2.4 GHz or 5 GHz. Your Retro-Fit kit is only compatible on 2.4 GHz networks, because it was designed to work reliably over greater distances and through insulated walls. It is incompatible with 5 GHz networks. Therefore, you must choose your 2G home network in order to complete the Wi-Fi configuration process. If you only have one network, you can assume it is 2G.

### **I don't know my Wi-Fi password or where to find it. What do I do?**

You must have your Wi-Fi home network name and password available to complete setup. If your smart phone is connected to Wi-Fi, the network name (or SSID) is listed in your smartphone Wi-Fi settings. You must know the password. Your Internet Service Provider likely set up the password on your Wi-Fi router and provided you with that information when connected your home. You may need to contact your provider if you do not know your password and cannot find the document that was provided at set up.

### **My device is taking a long time to connect. Is something wrong?**

Connecting to your home Wi-Fi network may take a few minutes, but this does not necessarily mean the connection will be unsuccessful. If Wi-Fi has not connected or if the app has not prompted you to select the status of your LED light after 5-10 minutes, verify that you have a good Wi-Fi signal in the garage and try again. If you have a good Wi-Fi signal and are unable to complete the set up contact the ca team at 866.599.4995 Mon-Fri 9am-8pm EST, Sat 10am-6pm EST .

### **I went through the Wi-Fi set up process and my LED light is flashing green. Why does this occur? What can I do to fix it?**

After you enter your Wi-Fi username and password, the door control module exits configuration mode and attempts to connect to the home Wi-Fi network and then to the cloud. As the device connects to your home Wi-Fi network, a series of confirmation messages will appear in the app indicating a successful Wi-Fi configuration and acknowledgement that setup is complete. A solid green light indicates that the door control module is properly connected and ready for use with the app. A flashing green light indicates that the door control module is connected to Wi-Fi

router but has not established a secure communication link to the cloud. You should see a solid green light quickly, but it can take up to 5 minutes.

If the LED remains flashing **green**, the connection to home router is complete, but connection to the cloud is not established. The router may be blocking the messages to the cloud. Turn the power to your home Wi-Fi router off, wait 10 seconds, and then turn it back on. After the home Wi-Fi network is back up, repeat the Wi-Fi set up process in the app. If that does not work, you can also try the alternative approach to Wi-Fi set up at the end of the document. If you need assistance, please contact the OHD Anywhere® Customer Care team at 888.901.2750 Mon-Fri 9am-8pm EST, Sat 10am-6pm EST.

**I went through the Wi-Fi set up process and my LED light is still red or yellow. Why does this occur?**

If the door control module LED turns **red**, the connection to the home Wi-Fi router was not successful. It could be because the Wi-Fi coverage in your garage is insufficient, the Wi-Fi network name and password were incorrect, the Wi-Fi network that was passed to the door control module was the 5 GHz network not the 2.4 GHz network, or the network does not have WPA or WPA2 encryption. Luckily, there are some ways you can resolve this issue yourself. First, verify that your Wi-Fi network and password are correct, make sure cellular data is turned off, and verify that you have Wi-Fi signal in your garage. Next, check the type of network you are attempting to connect to. The door control module uses 2.4 GHz, so if the home network has a separate 5 GHz network that appears as <Network Name 5G> in the network list and a 2.4 GHz network that shows up as <Network Name 2G> on the network list, be sure to use the 2.4 GHz network name. Once the home network name and password are entered, press submit. This passes the home network information from your smartphone to the door control module.

If none of these solutions work for you, consider the alternative Wi-Fi configuration method below or contact the OHD Anywhere® Customer Care team at 888.901.2750 Mon-Fri 9am-8pm EST, Sat 10am-6pm EST.

If the door control module LED stays **yellow**, it means that the smartphone was unable to connect to the gdocntl network and pass the home network information to the door control module. Reference question below for more.

**I've tried this approach to connecting my device and it's just not working. Are there any other ways to setup Wi-Fi?**

Yes, there is a second approach to passing the Wi-Fi network and password that uses an embedded webpage in the door control module when it is in configuration mode. To use this method, press and hold the Wi-Fi button until the device beeps. When the LED changes from **red** to **yellow**, go to the Wi-Fi settings on your smartphone and connect to the gdocntl network.

Once you are connected to the gdocntl network, go to the web browser on a smartphone or computer and enter <https://192.168.1.1>. This connects you to an embedded webpage in the door control module. Click on the configure button. The embedded webpage takes you to a set up screen. Here, you will select the home Wi-Fi network from a list of available networks, keep the WPA2 encryption selection, and then scroll down, enter the password for your home W-Fi network, keep the default service selection, and then select save. After hitting save, the first part of the configuration is complete, and the door control module connects to the home Wi-Fi network.

Once the door control module is connected to the home Wi-Fi network, the next step establishes a secure communication link between the door control module and the cloud. Press connect to submit the configuration and complete Wi-Fi set up. The cloud and the door control module will exchange keys/tokens, so a secure communication link is established. The LED will change to solid green. If the LED is flashing green, the connection to the cloud was not successful.

## Door Position Sensor Setup FAQs

Always reference printed instructions with the device and the on-screen prompts inside the app.

### Where is the red tab located on the door position sensor?

The red tab is located on the bottom of the device, under the button. Pull to activate your door position sensor.

### My door position sensor lights or door control module lights don't match what the app says they should be. What do I do?

In this case, it is likely that your door control module and door position sensor are not connecting successfully. Check that that the door control module and sensor are close to each other and are not separated by a wall.

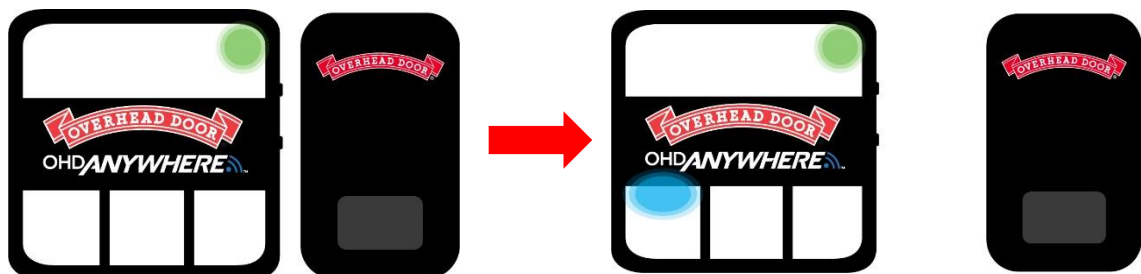
If this does not work or if the light on the door control module is solid **red**, the door position sensor is not paired or has become unpaired. See the FAQ below for information on how to pair devices.

### How do I manually pair my door position sensor to my door control module?

Hold down the button on the door control module you would like to open your new door.

While your selected button is flashing blue, hold down the button on the door position sensor until it also begins flashing.

After a few moments, both lights will turn off and be replaced by solid blue, indicating successful bluetooth connection. The light on the button should turn to solid blue within 20 seconds.



If the blue light on the door control module is still **flashing**, press the door position sensor button a second time. Once again, hold the button on the sensor in until the light on the sensor goes out. This should pair the door position sensor and give a solid blue light on your door controller button.

If your door position sensor light does not turn solid blue after following these instructions, contact the OHD Anywhere® Customer Care team at 888.901.2750 Mon-Fri 9am-8pm EST, Sat 10am-6pm EST.

### **How do I check the battery level on the door position sensor?**

When the battery on the door position sensor is getting low, the sensor battery life indicator in the app will change colors. A green battery life indicator means that the battery has more than 40% life remaining. A yellow indicator in the app means 40% life or less remaining, and a red indicator means that they batter has 20% or less life remaining. When the battery dies, the app will give a “Paired but Not Connected” error message. Replace the existing CR2450 coin cell style battery inside the door position sensor.

## Ceiling Mount Opener Adding a Device FAQs

Always reference printed instructions with the device and the on-screen prompts inside the app.

### **Where can I find the serial number or QR code on my device?**

The serial number on any overhead ceiling mount opener is on the bottom of the device, on a white sticker. It is preceded by iDCM S/N and it 15 characters in length. The QR code can be found immediately adjacent to the serial number.

### **I’m receiving an error when I attempt to register my device, what I do?**

There are several reasons you might receive an error when attempting to register your device. If you have not already, first try entering the serial number manually. If the error persists, it might be that the product was previously registered under a different account- this occurs frequently when customers move into a new home. Customer service can easily resolve this issue. Contact the OHD Anywhere® Customer Care team at 888.901.2750 Mon-Fri 9am-8pm EST, Sat 10am-6pm EST.

# Ceiling Mount Opener Wi-Fi FAQs

Always reference printed instructions with the device and the on-screen prompts inside the app.

## **I don't know if my home Wi-Fi has a strong signal in the garage. How do I find out?**

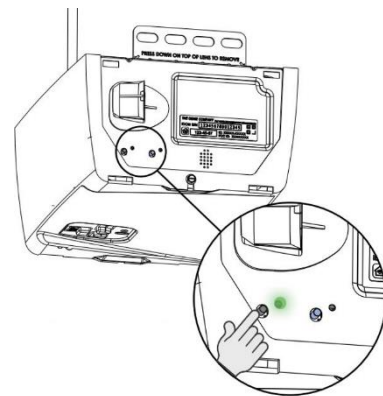
To function effectively, your garage door opener needs at least two bars or (-65dbm) of Wi-Fi signal to communicate with the app and the cloud. The easiest way to find out if you have adequate signal strength is simply to stand near your garage door opener and look at the Wi-Fi icon on your smart phone. On iOS devices, you can see your Wi-Fi signal icon in the top corner of the screen. On Android devices, signal icon can be found on the top of the screen.

## **My home Wi-Fi does not have a strong enough signal in the garage. What should I do?**

If your home Wi-Fi signal does not adequately cover your garage, you have a few things you can do to improve the signal strength. First, you can make sure that the Wi-Fi router is out in the open, not behind a flat screen TV or in a cabinet. You can also try moving your Wi-Fi router closer to the garage. If that does not work, you can also purchase a Wi-Fi extender. Wi-Fi extenders are available at electronics stores such as Best Buy®.

## **Where are the blue button and LED light located on my device?**

Located on the outside edge of the garage door opener, the LED light is a good indicator of the connection your opener has with Wi-Fi and with the cloud. The LED light and blue button are located under the plastic light cover for most garage door openers. (See figure)



## **How do I turn off cellular data? Why is this necessary?**

During the Wi-Fi set up process, your smartphone needs to connect directly to the garage door Wi-Fi network. Some smartphones automatically try to



use cellular data when a Wi-Fi network is not connected to the Internet. To avoid such connection issues, turning off cellular data during setup is recommended.

For iOS devices, turn off cellular data by exiting the app and opening settings. Once in settings, find the option labeled “Cellular” and tap to open Cellular settings. At the top of the page, tap to turn the green switch on the right-hand side of the screen off. The switch should turn grey.

For Android devices, turn off cellular data by swiping down from the top of the screen and tapping settings. Find and press ‘Data Usage’ to open cellular settings. Flick the ‘Mobile Data’ switch from on to off.

### **What do my light colors mean?**

A **red** light means that the unit is not connected to your home Wi-Fi network.

A **blue** light means that the garage door is in Wi-Fi configuration mode and ready to be configured. When the **red** LED changes to **blue**, the garage door opener has created a gdocntrl-xxxx Wi-Fi network, which allows your smartphone to connect to the garage door opener.

A **flashing green** light means your device is communicating with your home Wi-Fi network, but is not able to access the internet or the cloud. Flashing green lights often change to solid green after 5-10 minutes, signaling your device has secured stable communication with your home Wi-Fi and the cloud.

A **solid green** light means your device is successfully connected to your home Wi-Fi network and has established a secure communication link to the cloud.

### **I pressed the blue button and the light isn’t turning blue, what do I do?**

The LED light is designed to change to blue after approximately 7 seconds. Press/hold the blue button next to the red LED light until the opener beeps—then release—even if this process takes longer than 7 seconds. This should place your garage door opener in Wi-Fi configuration mode. If the

LED light still does not change, contact the OHD Anywhere® Customer Care team at 888.901.2750 Mon-Fri 9am-8pm EST, Sat 10am-6pm EST.

### **What is the “gdocntl-XXXX” network and why do I need to connect to it?**

The blue LED light on the garage door opener means that the opener is in Wi-Fi configuration mode. In configuration mode the garage door opener creates a Wi-Fi network that allows your phone to communicate with the garage door opener. Once your smartphone is connected to the garage door network, named gdocntl-xxxx, it allow your smart phone to pass your home Wi-Fi network name and password of your home Wi-Fi network to the opener when you input it. Connecting to the gdocntl network is necessary to connect your garage door to your home Wi-Fi network.

### **What is a 2.4 GHz network and how do I know if my home network qualifies?**

You may have noticed you have two or even three networks with the same name followed by 2G or 5G, both associated with your home Wi-Fi. This is because many Wi-Fi providers offer two ‘bands’ of Wi-Fi to your home, both 2.4 GHz and 5 GHz. These ‘bands’ can both provide reliable Wi-Fi to your home, but different devices can work best on either 2.4 GHz or 5 GHz. Your garage door opener is only compatible on 2.4 GHz networks, because it was designed to work reliably over greater distances and through insulated walls. It is incompatible with 5 GHz networks. Therefore, you must choose your 2G home network in order to complete the Wi-Fi configuration process. If you only have one network, you can assume it is 2G.

### **I don’t know my Wi-Fi password or where to find it. What do I do?**

You must have your Wi-Fi home network name and password available to complete setup. If your smart phone is connected to Wi-Fi, the network name (or SSID) is listed in your smartphone Wi-Fi settings. You must know the password. Your Internet Service Provider likely set up the password on your Wi-Fi router and provided you with that information when connected your home. You may need to contact your provider if you do not know your password and cannot find the document that was provided at set up.

## **My device is taking a long time to connect. Is something wrong?**

Connecting to your home Wi-Fi network may take a few minutes, but this does not necessarily mean the connection will be unsuccessful. If Wi-Fi has not connected or if the app has not prompted you to select the status of your LED light after 5-10 minutes, verify that you have a good Wi-Fi signal in the garage and try again. If you have a good Wi-Fi signal and are unable to complete the set up contact the OHD Anywhere® Customer Care team at 888.901.2750 Mon-Fri 9am-8pm EST, Sat 10am-6pm EST.

## **I went through the Wi-Fi set up process and my LED light is flashing green. Why does this occur? What can I do to fix it?**

After you enter your Wi-Fi username and password, the garage door opener exits configuration mode and attempts to connect to the home Wi-Fi network and then to the cloud. As the device connects to your home Wi-Fi network, a series of confirmation messages will appear in the app indicating a successful Wi-Fi configuration and acknowledgement that setup is complete. A solid green light indicates that the garage door opener is properly connected and ready for use with the app. A blinking green light indicates that the garage door opener is connected to Wi-Fi router but has not established a secure communication link to the cloud. You should see a solid green light quickly, but it can take up to 5 minutes.

If the LED remains blinking green, the connection to home router is complete, but connection to the cloud is not established. The router may be blocking the messages to the cloud. Turn the power to your home Wi-Fi router off, wait 10 seconds, and then turn it back on. After the home Wi-Fi network is back up, repeat the Wi-Fi set up process in the app. If that does not work, you can also try the alternative approach to Wi-Fi set up at the end of the document. If you need assistance, please contact the OHD Anywhere® Customer Care team at 888.901.2750 Mon-Fri 9am-8pm EST, Sat 10am-6pm EST.

## **I went through the Wi-Fi set up process and my LED light is still red or blue. Why does this occur?**

If the garage door opener LED turns red, the connection to the home Wi-Fi router was not successful. It could be because the Wi-Fi coverage in your

garage is insufficient, the Wi-Fi network name and password were incorrect, the Wi-Fi network that was passed to the garage door opener was the 5 GHz network not the 2.4 GHz network, or the network does not have WPA or WPA2 encryption. Luckily, there are some ways you can resolve this issue yourself. First, verify that your Wi-Fi network and password are correct, make sure cellular data is turned off, and verify that you have Wi-Fi signal in your garage. Next, check the type of network you are attempting to connect to. The garage door opener uses 2.4 GHz, so if the home network has a separate 5 GHz network that appears as <Network Name 5G> in the network list and a 2.4 GHz network that shows up as <Network Name 2G> on the network list, be sure to use the 2.4 GHz network name. Once the home network name and password are entered, press submit. This passes the home network information from your smartphone to the garage door opener.

If none of these solutions work for you, consider the alternative Wi-Fi configuration method below or contact the OHD Anywhere® Customer Care team at 888.901.2750 Mon-Fri 9am-8pm EST, Sat 10am-6pm EST.

If the garage door opener LED stays **blue**, it means that the smartphone was unable to connect to the gdocntl network and pass the home network information to the garage door opener. Reference question below for more.

**I've tried this approach to connecting my device and it's just not working. Are there any other ways to setup Wi-Fi?**

Yes, there is a second approach to passing the Wi-Fi network and password that uses an embedded webpage in the garage door opener when it is in configuration mode. To use this method, press and hold the Wi-Fi button until the device beeps. When the LED changes from **red** to **blue**, go to the Wi-Fi settings on your smartphone and connect to the gdocntl network.

Once you are connected to the gdocntl network, go to the web browser on a smartphone or computer and enter <https://192.168.1.1>. This connects you to an embedded webpage in the garage door opener. Click on the configure button. The embedded webpage takes you to a set up screen.

Here, you will select the home Wi-Fi network from a list of available networks, keep the WPA2 encryption selection, and then scroll down, enter the password for your home W-Fi network, keep the default service selection, and then select save. After hitting save, the first part of the configuration is complete, and the garage door opener connects to the home Wi-Fi network.

Once the garage door opener is connected to the home Wi-Fi network, the next step establishes a secure communication link between the garage door opener and the cloud. Press connect to submit the configuration and complete Wi-Fi set up. The cloud and the garage door opener will exchange keys/tokens, so a secure communication link is established. The LED will change to solid green. If the LED is blinking green, the connection to the cloud was not successful.

## Wall Mount Opener Adding a Device FAQs

Always reference printed instructions with the device and the on-screen prompts inside the app

### **Where can I find my serial number?**

You can find your serial number in two places: on your device, underneath the front flap -or- on the front cover of your physical installation booklet. In both locations the 15 character serial number is located on a white sticker and follows the denotation iDCM S/N.

### **I'm receiving an error when I attempt to register my device. What do I do?**

There are several reasons you might receive an error when attempting to register your device. If you have not already, first try entering the serial number manually. If the error persists, it might be that the product was previously registered under a different account- this occurs frequently when customers move into a new home. Customer service can easily resolve this issue. Contact the OHD Anywhere® Customer Care team at 888.901.2750 Mon-Fri 9am-8pm EST, Sat 10am-6pm EST.

## Wall Mount Opener Wi-Fi FAQs

Always reference printed instructions with the device and the on-screen prompts inside the app

### **I don't know if my home Wi-Fi has a strong signal in the garage. How do I find out?**

To function effectively, your garage door opener needs at least two bars or (-65dbm) of Wi-Fi signal to communicate with the app and the cloud. The easiest way to find out if you have adequate signal strength is simply to stand near your garage door opener and look at the Wi-Fi icon on your smart phone. On iOS devices, you can see your Wi-Fi signal icon in the top corner of the screen. On Android devices, signal icon can be found on the top of the screen.

### **My home Wi-Fi does not have a strong enough signal in the garage. What should I do?**

If your home Wi-Fi signal does not adequately cover your garage, you have a few things you can do to improve the signal strength. First, you can make sure that the Wi-Fi router is out in the open, not behind a flat screen TV or in a cabinet. You can also try moving your Wi-Fi router closer to the garage. If that does not work, you can also purchase a Wi-Fi extender. Wi-Fi extenders are available at electronics stores such as Best Buy®.

### **How do I turn off cellular data? Why is this necessary?**

During the Wi-Fi set up process, your smartphone needs to connect directly to the garage door Wi-Fi network. Some smartphones automatically try to use cellular data when a Wi-Fi network is not connected to the Internet. To avoid such connection issues, turning off cellular data during setup is recommended.

For iOS devices, turn off cellular data by exiting the app and opening settings. Once in settings, find the option labeled "Cellular" and tap to open Cellular settings. At the top of the page, tap to turn the green switch on the right-hand side of the screen off. The switch should turn grey.

For Android devices, turn off cellular data by swiping down from the top of the screen and tapping settings. Find and press 'Data Usage' to open cellular settings. Flick the 'Mobile Data' switch from on to off.

### Where are the blue button and LED light located on my device?

The blue button and LED light are located on the front facing side of the device, underneath the plastic cover. Push up on the cover, and look in the upper left hand corner for the button and light. Reference the graphics for a visual representation of the exact location.

### My light isn't turning blue. What do I do?

Press and hold the Wi-Fi button for several seconds, and the LED light should turn beep after 7-9 second then turn blue shortly thereafter. If the LED light does not turn yellow (**blue**) after several seconds, contact the OHD Anywhere® Customer Care team at 888.901.2750 Mon-Fri 9am-8pm EST, Sat 10am-6pm EST.

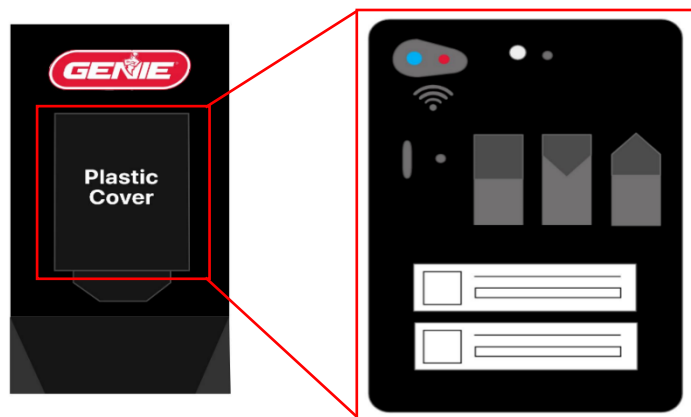
### What do my light colors mean?

A **red** light means that the unit is not connected to your home Wi-Fi network.

A **blue** light means that the garage door is in Wi-Fi configuration mode and ready to be configured.

When the **red** LED changes to **blue**, the garage door opener has created a gdocntrl-xxxx Wi-Fi network, which allows your smartphone to connect to the garage door opener.

A **flashing green** light means your device is communicating with your home Wi-Fi network, but is not able to access the internet or the cloud. Flashing green lights often change to solid green after 5-10 minutes, signaling your device has secured stable communication with your home Wi-Fi and the cloud.



A **solid green** light means your device is successfully connected to your home Wi-Fi network and has established a secure communication link to the cloud.

### **What is the “gdocntl-XXXX” network and why do I need to connect to it?**

The blue LED light on the garage door opener means that the opener is in Wi-Fi configuration mode. In configuration mode the garage door opener creates a Wi-Fi network that allows your phone to communicate with the garage door opener. Once your smartphone is connected to the garage door network, named gdocntrl-xxxx, it allows your smart phone to pass your home Wi-Fi network name and password of your home Wi-Fi network to the opener when you input it. Connecting to the gdocntrl network is necessary to connect your garage door to your home Wi-Fi network.

### **What is a 2.4 GHz network and how do I know if my home network qualifies?**

You may have noticed you have two or even three networks with the same name followed by 2G or 5G, both associated with your home Wi-Fi. This is because many Wi-Fi providers offer two ‘bands’ of Wi-Fi to your home, both 2.4 GHz and 5 GHz. These ‘bands’ can both provide reliable Wi-Fi to your home, but different devices can work best on either 2.4 GHz or 5 GHz. Your garage door opener is only compatible on 2.4 GHz networks, because it was designed to work reliably over greater distances and through insulated walls. It is incompatible with 5 GHz networks. Therefore, you must choose your 2G home network in order to complete the Wi-Fi configuration process. If you only have one network, you can assume it is 2G.

### **I don’t know my Wi-Fi password or where to find it. What do I do?**

You must have your Wi-Fi home network name and password available to complete setup. If your smart phone is connected to Wi-Fi, the network name (or SSID) is listed in your smartphone Wi-Fi settings. You must know the password. Your Internet Service Provider likely set up the password on your Wi-Fi router and provided you with that information when connected your home. You may need to contact your provider if you do not know your password and cannot find the document that was provided at set up.



## **My device is taking a long time to connect. Is something wrong?**

Connecting to your home Wi-Fi network may take a few minutes, but this does not necessarily mean the connection will be unsuccessful. If Wi-Fi has not connected or if the app has not prompted you to select the status of your LED light after 5-10 minutes, verify that you have a good Wi-Fi signal in the garage and try again. If you have a good Wi-Fi signal and are unable to complete the set up contact the OHD Anywhere® Customer Care team at 888.901.2750 Mon-Fri 9am-8pm EST, Sat 10am-6pm EST.

## **I went through the Wi-Fi set up process and my LED light is flashing green. Why does this occur? What can I do to fix it?**

After you enter your Wi-Fi username and password, the garage door opener exits configuration mode and attempts to connect to the home Wi-Fi network and then to the cloud. As the device connects to your home Wi-Fi network, a series of confirmation messages will appear in the app indicating a successful Wi-Fi configuration and acknowledgement that setup is complete. A solid green light indicates that the garage door opener is properly connected and ready for use with the app. A flashing green light indicates that the garage door opener is connected to Wi-Fi router but has not established a secure communication link to the cloud. You should see a solid green light quickly, but it can take up to 5 minutes.

If the LED remains flashing green, the connection to home router is complete, but connection to the cloud is not established. The router may be blocking the messages to the cloud. Turn the power to your home Wi-Fi router off, wait 10 seconds, and then turn it back on. After the home Wi-Fi network is back up, repeat the Wi-Fi set up process in the app. If that does not work, you can also try the alternative approach to Wi-Fi set up at the end of the document. If you need assistance, please contact the OHD Anywhere® Customer Care team at 888.901.2750 Mon-Fri 9am-8pm EST, Sat 10am-6pm EST.

## **I went through the Wi-Fi set up process and my LED light is still red or blue. Why does this occur?**

If the garage door opener LED turns red, the connection to the home Wi-Fi router was not successful. It could be because the Wi-Fi coverage in your

garage is insufficient, the Wi-Fi network name and password were incorrect, the Wi-Fi network that was passed to the garage door opener was the 5 GHz network not the 2.4 GHz network, or the network does not have WPA or WPA2 encryption. Luckily, there are some ways you can resolve this issue yourself. First, verify that your Wi-Fi network and password are correct, make sure cellular data is turned off, and verify that you have Wi-Fi signal in your garage. Next, check the type of network you are attempting to connect to. The garage door opener uses 2.4 GHz, so if the home network has a separate 5 GHz network that appears as <Network Name 5G> in the network list and a 2.4 GHz network that shows up as <Network Name 2G> on the network list, be sure to use the 2.4 GHz network name. Once the home network name and password are entered, press submit. This passes the home network information from your smartphone to the garage door opener.

If none of these solutions work for you, consider the alternative Wi-Fi configuration method below or contact the OHD Anywhere® Customer Care team at 888.901.2750 Mon-Fri 9am-8pm EST, Sat 10am-6pm EST.

If the garage door opener LED stays **blue**, it means that the smartphone was unable to connect to the gdocntl network and pass the home network information to the garage door opener. Reference question below for more.

**I've tried this approach to connecting my device and it's just not working. Are there any other ways to setup Wi-Fi?**

Yes, there is a second approach to passing the Wi-Fi network and password that uses an embedded webpage in the garage door opener when it is in configuration mode. To use this method, press and hold the Wi-Fi button until the device beeps. When the LED changes from **red** to **blue**, go to the Wi-Fi settings on your smartphone and connect to the gdocntl network.

Once you are connected to the gdocntl network, go to the web browser on a smartphone or computer and enter <https://192.168.1.1>. This connects you to an embedded webpage in the garage door opener. Click on the configure button. The embedded webpage takes you to a set up screen. Here, you will select the home Wi-Fi network from a list of available

networks, keep the WPA2 encryption selection, and then scroll down, enter the password for your home W-Fi network, keep the default service selection, and then select save. After hitting save, the first part of the configuration is complete, and the garage door opener connects to the home Wi-Fi network.

Once the garage door opener is connected to the home Wi-Fi network, the next step establishes a secure communication link between the garage door opener and the cloud. Press connect to submit the configuration and complete Wi-Fi set up. The cloud and the garage door opener will exchange keys/tokens, so a secure communication link is established. The LED will change to solid green. If the LED is flashing green, the connection to the cloud was not successful.

## Adding Users and Creating Virtual Keys FAQs

Always reference printed instructions with the device and the on-screen prompts inside the app

### **What are the different types of accounts?**

There are two types of accounts – a master/primary account and a user account.

The master/primary account controls access to the devices and can add additional garage door openers or door control modules. Only a master/primary account can add a device create rules.

A user account must be given permission to operate a device by a master account. Users can not invite others and con not create rules.

### **What are the different types of users?**

There are three major types of users – full access users, recurring users, and temporary users.

Full access users can control the door at any time unless/until the master account deletes the invitation. They can see if the door is open or closed but cannot add more users or create rules. Full Access can be given to people like family members or roommates.

Example: My daughter can have access to all doors.

Recurring users can operate the door on specific days of the week and/or during specific time windows. Recurring users cannot see the position of the door. The home page will provide an open and close option.

Example: The babysitter can have access to DOOR 1 every Monday and Wednesday between 8:00am – 4:00pm

Temporary users can operate the door for a preset length of time. If you select “temporary” as the access type, you will be able to set the length of the invitation. Recurring users cannot see the position of the door. The home page will provide an open option and a close option rather than reflecting the current position of the door.

Example: The plumber can have access to DOOR 1 on Monday, April 21st, 2019, between 8:00am – 10:00am

### **How many users can I add?**

You can invite up to 19 other users to access your garage door(s) through your account. Have the user download the app to create an account, then send the person an invite via email from the app. You can provide keys for access and remove them at any time you.

## Adding Rules FAQs

Always reference printed instructions with the device and the on-screen prompts inside the app

### **What are the different types of rules?**

There are two types of rules, a time-range rule and a duration rule.

A Time Range Rule sets a “schedule” for your garage door. For example, if DOOR 1 open between the hours of 11:00pm- 5:00am on any day of the week, perform an action.

A Duration Rule closes your garage door if it has been open for a certain period. For example, if DOOR 1 has been open for longer than 1 hour on either Monday, Wednesday or Friday, perform an action.

Actions can be ‘close’, ‘close and notify’ or ‘notify me’.

## **What if the door does not close when a rule should have closed the door?**

If there is an obstruction or something blocking the door, and the door does not close when a rule send a command, the app will try again 2 minutes later. After 2 failed consecutive commands, the system will 'shut down'. You will receive a 'UL Lockout' message, which means that there may be an issue that is preventing the door from closing. You must physically go to the door and operate the door locally from a wall console or remote to make sure the door is working. Manually operating the door will clear the 'UL Lockout' message and allow you to use your app to remotely close the door.

## Operation FAQs

Always reference printed instructions with the device and the on-screen prompts inside the app

### **Can I turn off the light and the sound when I operate the door using the app?**

The light and sound are required for remote operation. The light and sound alert anyone in and around the garage that the garage door is about to move and cannot be disabled.

### **What is a UL Lockout?**

UL Lockout means that your garage door opener has received two consecutive commands that it cannot perform for some reason. There are many potential causes that a door fails to close or open such as a bicycle fell over and is blocking the path of the door, or the door froze to the ground in extreme cold weather. If the door tried to close two times and there is something blocking the safety beams, the door will initiate movement, realize there is an obstruction and reverse. After 2 failed consecutive commands, remote operation is disabled and the system is put into UL Lockout.

### **How do I clear a UL Lockout error?**

To clear the lockout you must physically go to the door to see what is happening. Once you successfully operate the door locally from a wall console or a remote, the UL Lockout message will clear and you can use the app again.