

660/662

FIRE DOORS



INTEGRAL FRAME AND SILL FIRE-RATED COUNTER DOORS



COMMON APPLICATIONS INCLUDE SCHOOLS, CONCESSIONS, HOSPITALS AND CAFETERIAS

- **Built-in safety**
 - Fusible links separate at 165°F (74°C) for ambient conditions under 100°F (38°C), or at 212°F (100°C) for ambient conditions over 100°F (38°C), to close the door automatically under governor control
 - Meets strict fire safety testing standards
- **Options for added safety and simplified operation**
 - A variety of smoke detectors
 - Cylinder locking bottom bar with mortise cylinders
- **Fire Sentinel® for fail-safe protection**
 - UL-listed, fail-safe device provides a 10-second time-delay release and an independent 10-second time delay on power loss
- **Choice of galvanized or stainless steel**



INDUSTRY LEADING
COMMERCIAL & INDUSTRIAL SOLUTIONS

MODELS 660/662 INTEGRAL FRAME AND SILL FIRE-RATED COUNTER DOORS

Standard features at a glance

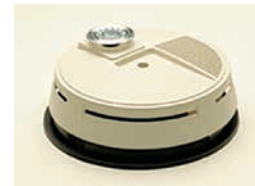
Label	UL 1 1/2-hour label
Maximum size	9' x 4' (2743 mm x 1219 mm)
Curtain	Model 660: Interlocking 22-gauge stainless steel slats Models 662: Interlocking 22-gauge galvanized steel slats
Integral frames/ guides	No. 4 finish stainless steel
Sill	14-gauge steel or stainless steel completely enclosed with fireproof acoustic filler
Hood	No. 4 finish stainless steel
Finish	Model 660: Stainless steel #4 brushed finish Model 662: Gray finish
Operation	Manual push-up
Mounting	Between jambs
Locking mechanism	Interior slide bolts



Fire Sentinel® time-delay release device



FireLite®



Smoke detectors

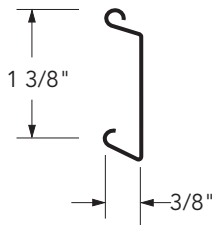


Smoke seals

Options

- Fire Sentinel® time-delay release device
- UL-listed brush-type smoke seals
- Photoelectric or ionization-type smoke detectors
- Locking mechanisms: Cylinder locking bottom bar with mortise cylinders

Integral frame and sill slat data



Model	Opening	Width	Slat	Frame	Curtain	Sill
660	Thru 9'0"	(2743 mm)	22 gauge ss	Stainless steel	Stainless steel	Stainless steel
662	Thru 9'0"	(2743 mm)	22 gauge	Stainless steel	Galvanized steel	Stainless steel

Slats are galvanized and painted or stainless steel (ss).



INDUSTRY LEADING
COMMERCIAL & INDUSTRIAL SOLUTIONS



2501 S. State Hwy. 121 Bus., Suite 200, Lewisville, TX 75067

1-800-929-DOOR • sales@overhaddoor.com

www.overhaddoor.com