



FLEXIBLE BOTTOM INTERIOR HIGH SPEED FABRIC DOOR



Patent-pending
curtain lock

Obstruction
sensors

Patent-pending
break away system

High cycle,
springless design

Optional vision
panels

Flexible bottom bar
with detachable
bottom seal

PERFECT FOR MANUFACTURING, PHARMACEUTICAL, WAREHOUSE AND DISTRIBUTION FACILITIES

- **Built for safety**
 - Flexible bottom with wireless monitored reversing edge
 - Built-in drop stop device
 - In-plane infrared sensors
- **Engineered for high cycles**
 - Springless design requires minimal interruption for maintenance
 - Direct-mounted gear drive minimizes wear and tear
 - Variable frequency drive eliminates sudden jolts from door start/stop
- **Optional vision panels** allow visual access and light
- **Programmable LED lighting system**
- **Strutless design** reduces operational noise of the door
- **Built for quick field repair**
 - Patent-pending curtain lock
 - Patent-pending guide, curtain, and break away systems
 - Flexible bottom bar with detachable bottom seal for easy replacement and troubleshooting
- **Low maintenance** breakaway design with side impact detection and push button self-repair; plug and play wiring
- **Hood is standard**



INDUSTRY LEADING
COMMERCIAL & INDUSTRIAL SOLUTIONS

MODEL 990 FLEXIBLE BOTTOM INTERIOR HIGH SPEED FABRIC DOOR

Standard features at a glance

Application	Interior/Interior
Maximum height	12'
Maximum width	12'
Maximum opening speed	Up to 70"/sec
Maximum closing speed	Up to 40"/sec
Curtain lock	Yes
Break away self reset	Yes
Wind load*	Up to 3.0 psf
Curtain material	2 layers of light PVC-coated polyester with 1 layer of polyester weave
Vision	Optional 20" high windows spaced evenly across width of door
Operation	Direct drive motor and gearbox system with a door stop device
Control panel	Variable frequency drive NEMA 4X cULus listed; Onboard self diagnostic and service reminder; Built-in padlockable field disconnect
Obstruction safety detection	Infrared sensors mounted in-plane to the door curtain at 18" and 50" - 54" from floor
Reversing safety edge	Wireless reversing edge; Flexible bottom bar with detachable bottom seal
Available supply voltages	105-125V AC 1PH; 220-240V AC 1PH; 208-245V AC 3PH/60Hz; 575V AC 3PH/60Hz (requires transformer)
Hinged guides	Provide easy access for maintenance
Warranty	5-Year Limited on drive motor and gearbox; 1-Year Limited on all other available components

Options

- **Actuation options** – Push button, key switch, pull switch, loop detector, motion detector, treadle switch, radio control. Wireless options: pull switches, 1 or 3 button push button, palm button
- **Signaling device options** – Red/green LED warning light, horn/strobe combination, rotating warning light
- **Programmable LED lighting system** – 3' tall light bar with red, yellow, green lighting

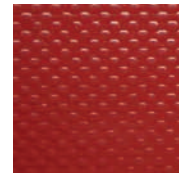
Curtain color options



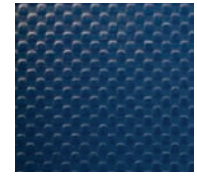
White



Gray



Red

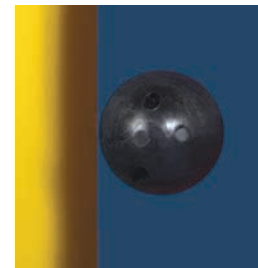


Blue

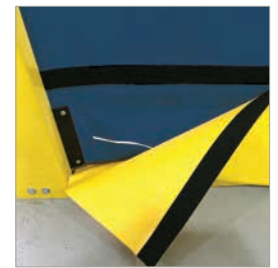


Standard color for guides and bottom bar is yellow. Approximately 200 optional RAL powder coat colors are also available. Actual colors may vary from brochure due to fluctuation in the printing process. **Always request a color sample from your Overhead Door™ Distributor for accurate color matching.**

* Wind load is the ultimate pressure tested at door width of 12'.



Patent-pending curtain lock allows for easy field repairs.



Flexible bottom bar with detachable bottom seal for easy replacement and troubleshooting.



INDUSTRY LEADING
COMMERCIAL & INDUSTRIAL SOLUTIONS

2501 S. State Hwy. 121 Bus., Suite 200, Lewisville, TX 75067

1-800-929-DOOR • sales@overheaddoor.com

overheaddoor.com

