



## INTERIOR HIGH SPEED FABRIC DOOR



## PERFECT FOR MANUFACTURING, PHARMACEUTICAL, COLD STORAGE, WAREHOUSE AND DISTRIBUTION FACILITIES

- **Engineered for high cycles**
  - Springless design requires minimal interruption for maintenance
  - Direct-mounted gear drive minimizes wear and tear
  - Variable frequency drive eliminates sudden jolts from door start/stop
- **Airtight design** prevents airborne contaminants from entering a controlled environment and reduces air exchange to no higher than 0.236 cfm/sf (ASTM E-283)
- **Optional vision panels** allow visual access and light
- **Patent-pending curtain lock** enables doors to be repaired quickly and in the field, unlike zippered doors
- **Low maintenance** breakaway design with side impact detection and push button self-repair; plug and play wiring
- **Hood is standard**
- **Programmable LED lighting system**



INDUSTRY LEADING  
COMMERCIAL & INDUSTRIAL SOLUTIONS

# MODEL 991 INTERIOR HIGH SPEED FABRIC DOOR

## Standard features at a glance

Application	Interior/Interior
Maximum height	14'
Maximum width	14'
Maximum opening speed	Up to 70"/sec
Maximum closing speed	Up to 40"/sec
Certified air tightness*	< 0.236 cfm/sq ft
Curtain lock	Yes
Break-away self reset	Yes
Wind load**	Up to 7.5 psf
Curtain material	2 layers of PVC-coated polyester with 1 layer of polyester weave
Vision	Optional 20" high windows spaced evenly across width of door
Operation	Direct drive motor and gearbox system with a door stop device
Control panel	Variable frequency drive NEMA 4X cULus listed; Onboard self diagnostic and service reminder; Built-in padlockable field disconnect
Obstruction safety detection	Infrared sensors mounted in-plane to the door curtain at 18" and 50" - 54" from floor
Reversing safety edge	Wireless reversing edge
Available supply voltages	105-125V AC 1PH; 220-240V AC 1PH; 208-245V AC 3PH/60Hz; 575V AC 3PH/60Hz (requires transformer)
Warranty	5-Year Limited

## Options

- **Actuation options** – Push button, key switch, pull switch, loop detector, motion detector, treadle switch, radio control. Wireless options: pull switches, 1 or 3 button push button, palm button
- **Signaling device options** – Red/green LED warning light, horn/strobe combination, rotating warning light
- **Programmable LED lighting system** – 3' tall light bar with red, yellow, green lighting

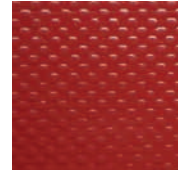
## Curtain color options



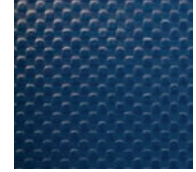
White



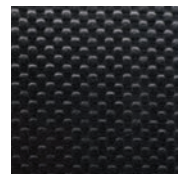
Gray



Red



Blue†



Black

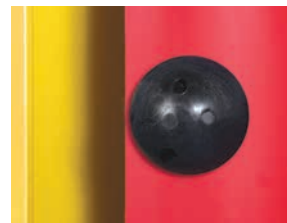
†FDA/USDA Certified Fabric



Standard color for guides and bottom bar is yellow. Approximately 200 optional RAL powder coat colors are also available. Actual colors may vary from brochure due to fluctuation in the printing process. **Always request a color sample from your Overhead Door™ Distributor for accurate color matching.**

\* Air tightness is independently tested to ASTM E283 test standard.

\*\* Wind load is the ultimate pressure tested at door width of 10'.



Patent-pending curtain lock



INDUSTRY LEADING  
COMMERCIAL & INDUSTRIAL SOLUTIONS

2501 S. State Hwy. 121 Bus., Suite 200, Lewisville, TX 75067

1-800-929-DOOR • sales@overheaddoor.com

overheaddoor.com

